

PIM 120

10/700us Impulse Module

■ **IEC 61000-4-5 and ITU K.44** describe a 10/700us impulse shape for testing communications equipment. This impulse is used to test telecommunications and data general control interface equipment. In addition the waveshape is also used to test the safety of electrical equipment as described in e.g. IEC 60065 and IEC 60950.

Safety is paramount with surge impulses. The PIM 120 High Voltage connections are all linked into the System Safety Concept which prevents high voltage plugs or cables from exposing operators to potentially lethal voltages. This concept is extended to Coupling/Decoupling Networks (CDNs) connected to the PIM 120 output.

PIM 120 as part of the PSURGE 8000 Surge Platform System can be used together with **Coupling / De-coupling Networks** (CDNs) for superimposition of the impulse on telecom and other communication lines. The PCD 120 and the PCD 122 are tailored to meet the ITU and IEC requirements for 2 & 4 wire interfaces.

PSURGE 8000 Surge Platform provides all the programming functions required to perform IEC, and ITE ITU testing without the need of a control computer. Voltage and Current monitor circuits enable quick and easy verification of the impulse shape and amplitude. In addition, **peak measurement circuits** are used to help determine EUT PASS/FAIL criteria. The integration in the WinFEAT&R **control and reporting software** package enhances an efficient set-up and operation of this test system. Most importantly, the test load can be transferred to a computer freeing valuable resources



FEATURES

- ☑ **Floating** high voltage output
- ☑ **10/700us** pulse **15Ω & 40Ω**
- ☑ **7.4kV** impulse voltage
- ☑ **8kV** charging voltage as in IEC 60950
- ☑ Impulse voltage & current **monitors**
- ☑ WinFEAT&R software integrated

BENEFITS

International application – Specifically designed to meet and exceed the requirements of IEC, EN, and ITU tests for telecom and data line applications.

Safe and Easy – The interlocked HV section and the integrated controller allow your operators to test safely and easily.

Sturdy and Reliable – Careful component selection ensures that the PIM 120 will continue to operate under the most strenuous testing regime.

Report Generation – The unit can automatically generate test reports without a computer. Add WinFEAT&R control and reporting software to collect and collate data in any format you like.

Fully flexible solution – The PIM 120 connects to an EUT via either a PCD 120 or PCD 122. Decoupling units are also separate and can be selected according to application. When no voltage is present on the EUT lines the PIM 120 can be connected directly to these EUT lines.

APPLICATIONS

- Communication Systems
- IEC 61000-4-5 Edition 3
- ITU K.20, K.21 & K.45 Telecom Interfaces
- IEC 60950 & UL 1950 ITE equipment
- IEC 60065 Audio & Video apparatus

TECHNICAL SPECIFICATIONS

Impulse Voltage	0.20 – 7.4kV ±10%
Source Impedance	15 & 40 Ohm
Impulse Polarity	Positive and Negative
Repetition @ Umax	10 seconds / 6 per minute
Impulse Output	HV connector with safety circuit

Front time voltage	10us ±30%
Decay time voltage	700us ±20%
Front time current	5us ±20%
Decay time current	320us ±20%
Monitor Outputs	BNC, volts & current

Weights and Dimensions

45 x 20 x 57 cm (W x H x D)	44 lbs (25 kg net weight)
-----------------------------	---------------------------

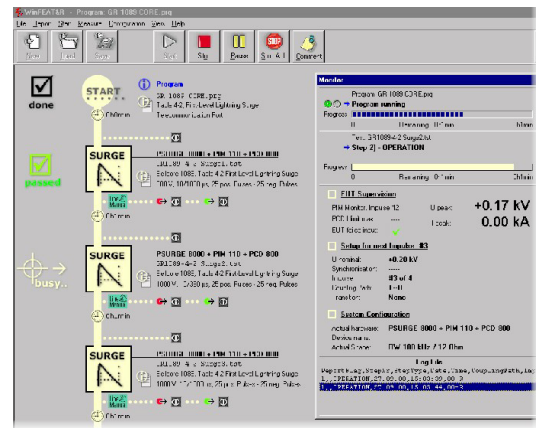
PIM 120 ART. NO. 249940

- Qty. 1 PIM 120 Impulse Module
- Qty. 1 HV DC Bus cable 1m
- Qty. 1 HAEFELY HIPOTRONICS Bus cable 0.5m
- Qty. 1 Earth bonding cable 1m
- Qty. 1 Earth bonding cable 0.25m
- Qty. 1 Users Manual

OPTIONS AND ACCESSORIES

- PCD 120 4 wire coupling unit compliant to ITU & IEC requirements. Automatic coupling path switching.
- PIM 100 Combination wave generator according to ANSI C62.41 & IEC 61000-4-5
- PCD 122 4 wire coupling unit compliant to IEC and ITU requirements. Manual coupling path control.
- DEC 5 4 wire decoupling unit with current compensated inductors for decoupling according to IEC 61000-4-5.
- DEC 6 4 wire decoupling unit with resistors according to ITU K.44.
- Meas. Adapter Pig tail cable with HV plug, 1m. Used to connect the PIM 120 directly to the EUT.
- WinFEAT&R Control and reporting software. Runs under windows 98, NT, ME, 2000, XP

WinFEAT&R Control Window



DEC 6 Decoupling unit



OFFICES:

Europe
 Haefely Test AG
 Birsstrasse 300
 4052 Basel
 Switzerland

☎ + 41 61 373 4111
 ☎ + 41 61 373 4912
 ✉ sales@haefely.com

China

Haefely Test AG Representative Beijing Office
 8-1-602, Fortune Street
 No. 67, Chaoyang Road, Chaoyang District
 Beijing, China 100025

☎ + 86 10 8578 8099
 ☎ + 86 10 8578 9908
 ✉ sales@haefely.com.cn

North America

Hipotronics, Inc.
 1650 Route 22 N
 Brewster, NY 10509
 United States

☎ + 1 845 279 3644
 ☎ + 1 845 279 2467
 ✉ sales@hipotronics.com